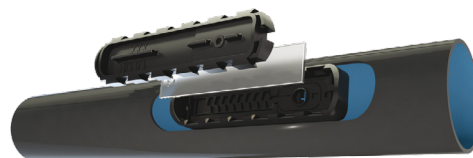




UNIRAM™ CNL

INTEGRAL PRESSURE-COMPENSATING,
CONTINUOUSLY SELF-CLEANING, ANTI-SIPHON
AND ANTI-DRAIN MECHANISM DRIPPER



16009 - 16010 - 16012 - 17012 - 20010 - 20012 - 23010

TECHNICAL INFORMATION

- Pressure-compensating range: 1.0-4.0 bar.
- Anti-Siphon and Anti-Drain mechanism.
- Largest filter in each dripper. Recommended filtration: 130 micron / 120 mesh.
Filtration method is to be selected based on the kind and concentration of the dirt particles existing in the water.
Wherever sand exceeding 2 ppm exists in the water, a Hydrocyclone is to be installed before the main filter.
When sand/ silt/ clay solids exceed 100 ppm, pre treatment will be applied according to Netafim™ expert team's instructions.
- Double TurboNet™ labyrinth with large water passage.
- To be "welded" into thick-walled dripperlines (0.90, 1.00, 1.20 mm).
- Injected dripper, very low CV.
- Injected silicon diaphragm.
- High UV resistant. Resistant to standard nutrients used in agricultural.
- UniRam™ dripperlines meet ISO 9261 Standards with production certified by the Israel Standards Institute (SII).

DRIPPERS TECHNICAL DATA

FLOW RATE* (L/H)	WORKING PRESSURE RANGE (BAR)	WATER PASSAGES DIMENSIONS WIDTH-DEPTH-LENGTH (MM)	FILTRATION AREA (MM ²)	CONSTANT K	EXPONENT * X	RECOMMENDED FILTRATION (MICRON)/(MESH)	SHUT OFF PRESSURE (BAR)
0.7	1.0 – 4.0	0.70 x 0.65 x 40	110	0.7	0	130/120	0.14
1.0	1.0 – 4.0	0.83 x 0.74 x 40	130	1.0	0	130/120	0.14
1.6	1.0 – 4.0	1.07 x 0.79 x 40	130	1.6	0	130/120	0.14
2.3	1.0 – 4.0	1.26 x 0.95 x 40	130	2.3	0	130/120	0.14
3.5	1.0 – 4.0	1.59 x 1.10 x 40	150	3.5	0	130/120	0.14

* Within working pressure range

DRIPPERLINES TECHNICAL DATA

MODEL	INSIDE DIAMETER (MM)	WALL THICKNESS (MM)	OUTSIDE DIAMETER (MM)	MAX. WORKING PRESSURE (BAR)	MAXIMUM FLUSHING PRESSURE (BAR)	KD
16009	14.2	0.9	16.0	3.0	3.9	1.3
16010	14.2	1.0	16.2	3.5	4.6	1.3
16012	14.2	1.2	16.6	4.0	5.2	1.3
17012	14.6	1.2	17.0	4.0	5.2	1.1
20010	17.5	1.0	19.5	3.5	4.6	0.4
20012	17.5	1.2	19.9	4.0	5.2	0.4
23010	20.8	1.0	22.8	3.0	3.5	0.3

DRIPPERLINES PACKAGE DATA (ON BUNDLED COILS)

MODEL	WALL THICKNESS (MM)	COIL LENGTH (M)	DISTANCE BETWEEN DRIPPERS (M)	AVERAGE* COIL WEIGHT (KG)	COILS IN A 40 FEET CONTAINER (UNITS)	TOTAL IN A 40 FEET CONTAINER (M)
16009	0.9	500	0.15 to 1.00	20.3	330	165000
16010	1.0	500	0.15 to 1.00	22.1	330	165000
16012	1.2	400	0.15 to 1.00	21.2	352	140800
17012	1.2	400	0.15 to 1.00	22.4	352	140800
20010	1.0	300	0.15 to 1.00	17.4	330	99000
20012	1.2	300	0.15 to 1.00	20.2	330	99000
23010**	1.0	200	0.15 to 0.25	14.7	480	96000
		300	0.30 to 1.00	20.7		144000

*According to drippers spacing

**Package only on carton/plastic coils

MAX. LATERAL LENGTH (METER) AT DIFFERENT INLET PRESSURE AND DIFFERENT SLOPES

UNIRAM™ CNL 16009/16010/16012 • ID 14.2 MM • KD 1.3 • FLOW RATE 0.7 L/H

	DISTANCE BETWEEN DRIPPERS (METER)									
	INLET PRESSURE (BAR)	0.2	0.3	0.4	0.5	0.6	0.7	0.8	0.9	1.0
UPHILL 2%	1.5	83	112	135	153	168	180	190	197	204
	2.0	111	154	190	221	248	271	291	310	326
	2.5	130	182	227	267	302	334	362	388	411
	3.0	145	204	256	303	345	383	418	449	478
	3.5	158	223	281	333	380	424	463	500	534
	4.0	169	239	302	359	412	459	503	545	583

FLAT TERRAIN	1.5	96	137	176	213	247	279	310	340	369
	2.0	121	174	224	270	314	356	395	434	471
	2.5	139	200	257	311	361	410	456	500	543
	3.0	153	221	284	343	400	453	504	554	600
	3.5	165	239	306	371	431	489	545	598	649
	4.0	176	254	326	395	460	522	581	637	692

DOWNHILL 2%	1.5	108	163	219	275	331	387	443	500	557
	2.0	131	195	258	321	382	444	505	565	626
	2.5	148	218	288	355	422	488	553	617	681
	3.0	161	238	312	384	455	524	593	661	727
	3.5	173	254	332	409	483	557	628	698	768
	4.0	183	269	351	431	509	585	659	733	805

Minimum considered pressure 1.0 bar

Max. working pressure according the dripperline wall thickness definition

MAX. LATERAL LENGTH (METER) AT DIFFERENT INLET PRESSURE AND DIFFERENT SLOPES

UNIRAM™ CNL 16009/16010/16012 • ID 14.2 MM • KD 1.3 • FLOW RATE 1.0 L/H

	DISTANCE BETWEEN DRIPPERS (METER)									
	INLET PRESSURE (BAR)	0.2	0.3	0.4	0.5	0.6	0.7	0.8	0.9	1.0
UPHILL 2%	1.5	68	93	113	131	145	158	167	176	184
	2.0	90	125	156	183	207	228	247	265	280
	2.5	105	147	185	219	249	277	302	326	347
	3.0	116	164	208	247	282	315	345	373	399
	3.5	126	179	227	270	310	347	381	412	442
	4.0	135	192	243	291	334	375	412	447	480

FLAT TERRAIN	1.5	76	109	140	169	196	222	246	270	293
	2.0	96	138	177	214	249	282	314	345	374
	2.5	110	158	204	246	286	325	362	397	431
	3.0	121	175	225	272	317	359	400	439	477
	3.5	131	189	243	294	342	388	432	474	515
	4.0	139	201	258	313	364	414	461	506	549

DOWNHILL 2%	1.5	83	125	166	208	248	290	330	372	412
	2.0	102	151	199	246	292	337	382	428	472
	2.5	115	170	223	274	325	374	422	471	518
	3.0	126	185	242	298	352	404	456	507	556
	3.5	135	198	259	318	374	430	484	537	590
	4.0	144	210	274	336	395	453	510	565	620

Minimum considered pressure 1.0 bar

Max. working pressure according the dripperline wall thickness definition

MAX. LATERAL LENGTH (METER) AT DIFFERENT INLET PRESSURE AND DIFFERENT SLOPES

UNIRAM™ CNL 16009/16010/16012 • ID 14.2 MM • KD 1.3 • FLOW RATE 1.6 L/H

	DISTANCE BETWEEN DRIPPERS (METER)									
	INLET PRESSURE (BAR)	0.2	0.3	0.4	0.5	0.6	0.7	0.8	0.9	1.0
UPHILL 2%	1.5	51	71	88	103	116	127	138	147	155
	2.0	67	95	119	141	160	179	195	210	224
	2.5	78	110	140	166	191	214	234	254	272
	3.0	86	123	156	187	214	241	265	288	309
	3.5	93	133	170	204	235	263	290	316	340
	4.0	100	143	182	218	251	284	313	341	367

FLAT TERRAIN	1.5	56	80	103	124	144	163	182	200	216
	2.0	70	101	130	158	184	208	231	254	276
	2.5	81	116	150	181	211	239	266	293	318
	3.0	89	128	165	200	233	265	294	324	352
	3.5	96	139	178	216	252	286	318	350	380
	4.0	102	147	190	230	268	305	339	373	405

DOWNHILL 2%	1.5	60	89	117	145	173	200	228	255	282
	2.0	74	108	142	175	206	238	269	299	329
	2.5	84	122	160	197	232	266	300	333	365
	3.0	92	134	175	214	252	289	325	360	395
	3.5	98	144	187	229	269	309	346	384	421
	4.0	104	152	198	242	285	326	366	405	444

Minimum considered pressure 1.0 bar

Max. working pressure according the dripperline wall thickness definition

MAX. LATERAL LENGTH (METER) AT DIFFERENT INLET PRESSURE AND DIFFERENT SLOPES

UNIRAM™ CNL 16009/16010/16012 • ID 14.2 MM • KD 1.3 • FLOW RATE 2.3 L/H

	DISTANCE BETWEEN DRIPPERS (METER)									
	INLET PRESSURE (BAR)	0.2	0.3	0.4	0.5	0.6	0.7	0.8	0.9	1.0
UPHILL 2%	1.5	46	68	90	111	132	153	173	193	212
	2.0	57	84	110	135	160	183	206	230	252
	2.5	65	95	124	153	179	206	231	257	281
	3.0	72	105	136	167	196	224	252	279	305
	3.5	77	113	146	179	209	240	270	298	326
	4.0	82	119	155	189	222	254	285	315	344

FLAT TERRAIN	1.5	44	63	81	98	114	130	144	158	171
	2.0	55	80	103	125	145	165	183	201	218
	2.5	64	92	118	143	167	189	210	231	251
	3.0	70	101	130	158	184	209	233	256	278
	3.5	76	109	141	171	199	226	252	276	301
	4.0	80	116	150	182	212	241	268	294	320

DOWNHILL 2%	1.5	41	58	72	85	97	106	116	124	132
	2.0	53	76	96	114	130	146	160	174	186
	2.5	62	88	112	134	154	173	190	207	222
	3.0	68	98	124	150	172	194	214	233	251
	3.5	74	106	135	163	188	211	234	256	276
	4.0	79	113	145	174	202	228	251	275	297

Minimum considered pressure 1.0 bar

Max. working pressure according the dripperline wall thickness definition

MAX. LATERAL LENGTH (METER) AT DIFFERENT INLET PRESSURE AND DIFFERENT SLOPES

UNIRAM™ CNL 16009/16010/16012 • ID 14.2 MM • KD 1.3 • FLOW RATE 3.5 L/H

		DISTANCE BETWEEN DRIPPERS (METER)								
SLOPE	INLET PRESSURE (BAR)	0.2	0.3	0.4	0.5	0.6	0.7	0.8	0.9	1.0
	UPHILL 2%	1.5	32	45	56	67	77	85	94	101
2.0		41	58	74	89	102	114	126	137	147
2.5		47	68	86	104	119	134	149	162	175
3.0		52	75	96	115	133	151	166	182	196
3.5		56	81	104	125	145	164	182	198	215
4.0		60	86	111	134	155	175	194	213	230
FLAT TERRAIN	1.5	33	48	62	75	87	99	110	121	131
	2.0	42	61	78	95	110	125	139	153	166
	2.5	48	70	90	109	127	144	161	176	192
	3.0	53	77	99	120	140	159	178	195	212
	3.5	57	83	107	130	151	172	192	211	229
	4.0	61	88	114	138	161	183	204	224	244
DOWNHILL 2%	1.5	35	51	67	82	97	112	126	140	154
	2.0	43	63	82	101	119	136	153	169	186
	2.5	49	72	94	114	134	153	173	191	209
	3.0	54	79	102	125	147	168	188	208	228
	3.5	58	85	110	134	158	180	202	223	244
	4.0	62	90	117	143	167	191	214	236	258

Minimum considered pressure 1.0 bar

Max. working pressure according the dripperline wall thickness definition

MAX. LATERAL LENGTH (METER) AT DIFFERENT INLET PRESSURE AND DIFFERENT SLOPES

UNIRAM™ CNL 17012 • ID 14.6 MM • KD 1.1 • FLOW RATE 0.7 L/H

		DISTANCE BETWEEN DRIPPERS (METER)								
SLOPE	INLET PRESSURE (BAR)	0.2	0.3	0.4	0.5	0.6	0.7	0.8	0.9	1.0
	UPHILL 2%	1.5	89	119	142	160	175	186	195	203
2.0		120	164	202	234	260	284	304	322	338
2.5		141	195	242	283	319	351	380	406	429
3.0		157	219	274	323	365	405	440	472	501
3.5		171	240	300	355	404	449	490	527	562
4.0		183	257	324	383	437	487	533	574	614
FLAT TERRAIN	1.5	104	148	190	228	264	299	331	363	393
	2.0	131	188	241	290	337	381	422	463	502
	2.5	151	216	277	334	388	438	487	534	579
	3.0	166	239	306	369	428	484	538	590	640
	3.5	180	258	330	399	463	524	582	638	692
	4.0	191	274	352	425	493	559	621	680	738
DOWNHILL 2%	1.5	118	179	239	300	361	422	483	545	606
	2.0	143	212	281	349	415	482	547	613	678
	2.5	161	238	312	386	457	528	598	667	736
	3.0	176	258	338	416	492	567	641	713	785
	3.5	188	276	360	443	523	601	678	753	828
	4.0	199	292	380	466	550	631	711	789	867

Minimum considered pressure 1.0 bar

Due to lateral filling time and flushing effectiveness it is not recommended to exceed 800 meters lateral length

MAX. LATERAL LENGTH (METER) AT DIFFERENT INLET PRESSURE AND DIFFERENT SLOPES

UNIRAM™ CNL 17012 • ID 14.6 MM • KD 1.1 • FLOW RATE 1.0 L/H

	DISTANCE BETWEEN DRIPPERS (METER)									
	INLET PRESSURE (BAR)	0.2	0.3	0.4	0.5	0.6	0.7	0.8	0.9	1.0
UPHILL 2%	1.5	73	99	120	138	152	164	174	183	190
	2.0	97	134	166	194	218	240	260	277	293
	2.5	113	158	198	233	264	293	318	342	364
	3.0	126	177	222	263	300	334	365	393	420
	3.5	136	193	243	289	330	368	403	437	467
	4.0	146	206	261	311	356	398	437	473	507
FLAT TERRAIN	1.5	82	118	150	181	209	237	263	288	312
	2.0	104	149	191	230	267	302	335	367	398
	2.5	119	171	219	265	307	348	386	424	459
	3.0	132	189	242	293	340	384	427	469	508
	3.5	142	204	262	316	367	416	462	507	550
	4.0	151	217	279	337	391	443	493	540	586
DOWNHILL 2%	1.5	91	137	181	226	271	315	359	403	448
	2.0	111	164	216	267	316	365	414	463	510
	2.5	126	185	242	297	351	404	456	508	559
	3.0	137	201	262	322	380	436	491	546	599
	3.5	147	215	280	344	404	464	522	579	635
	4.0	156	228	296	363	427	489	550	608	667

Minimum considered pressure 1.0 bar

MAX. LATERAL LENGTH (METER) AT DIFFERENT INLET PRESSURE AND DIFFERENT SLOPES

UNIRAM™ CNL 17012 • ID 14.6 MM • KD 1.1 • FLOW RATE 1.6 L/H

	DISTANCE BETWEEN DRIPPERS (METER)									
	INLET PRESSURE (BAR)	0.2	0.3	0.4	0.5	0.6	0.7	0.8	0.9	1.0
UPHILL 2%	1.5	55	76	94	109	122	134	144	153	161
	2.0	72	101	127	150	170	189	206	221	235
	2.5	84	119	150	178	203	226	248	268	287
	3.0	93	132	167	200	229	256	281	304	327
	3.5	101	144	182	218	250	281	309	335	360
	4.0	108	154	195	234	269	302	333	362	389
FLAT TERRAIN	1.5	60	86	110	133	155	175	194	212	231
	2.0	76	110	140	170	197	223	247	271	294
	2.5	88	126	161	195	226	256	285	312	339
	3.0	97	139	178	215	250	284	315	346	375
	3.5	104	150	192	233	270	307	341	374	406
	4.0	111	160	205	248	288	326	363	399	432
DOWNHILL 2%	1.5	65	97	127	158	188	217	246	276	305
	2.0	80	118	154	189	223	257	290	323	355
	2.5	91	133	173	213	250	287	323	358	393
	3.0	100	146	189	231	272	312	350	388	425
	3.5	107	156	203	248	290	333	374	413	452
	4.0	114	165	214	262	307	351	394	436	476

Minimum considered pressure 1.0 bar

MAX. LATERAL LENGTH (METER) AT DIFFERENT INLET PRESSURE AND DIFFERENT SLOPES

UNIRAM™ CNL 17012 • ID 14.6 MM • KD 1.1 • FLOW RATE 2.3 L/H

	DISTANCE BETWEEN DRIPPERS (METER)									
	INLET PRESSURE (BAR)	0.2	0.3	0.4	0.5	0.6	0.7	0.8	0.9	1.0
UPHILL 2%	1.5	44	62	77	90	102	113	122	131	138
	2.0	58	81	102	122	139	155	170	183	196
	2.5	67	95	120	143	164	183	202	219	235
	3.0	74	105	134	160	184	207	228	248	266
	3.5	80	114	146	174	201	226	250	271	292
	4.0	86	122	156	187	215	242	268	292	315

FLAT TERRAIN	1.5	47	68	87	105	122	138	154	168	183
	2.0	60	86	111	134	155	176	196	214	233
	2.5	69	99	127	154	179	202	226	248	268
	3.0	76	110	140	170	197	224	249	274	297
	3.5	82	118	152	184	214	242	270	295	321
	4.0	87	126	162	196	227	258	287	315	342

DOWNHILL 2%	1.5	51	74	98	121	143	165	186	208	229
	2.0	63	92	119	146	172	197	222	247	271
	2.5	71	104	135	165	194	222	249	275	302
	3.0	78	113	147	180	211	242	271	300	328
	3.5	84	122	158	193	226	258	290	320	350
	4.0	89	129	168	204	239	273	306	338	369

Minimum considered pressure 1.0 bar

MAX. LATERAL LENGTH (METER) AT DIFFERENT INLET PRESSURE AND DIFFERENT SLOPES

UNIRAM™ CNL 17012 • ID 14.6 MM • KD 1.1 • FLOW RATE 3.5 L/H

	DISTANCE BETWEEN DRIPPERS (METER)									
	INLET PRESSURE (BAR)	0.2	0.3	0.4	0.5	0.6	0.7	0.8	0.9	1.0
UPHILL 2%	1.5	34	48	60	72	81	90	98	106	113
	2.0	44	63	79	95	109	122	134	145	156
	2.5	51	73	92	111	128	144	158	172	185
	3.0	57	81	103	124	143	160	178	194	208
	3.5	61	88	112	134	155	175	194	212	228
	4.0	65	93	119	144	166	188	207	227	245

FLAT TERRAIN	1.5	36	52	66	80	93	106	117	129	139
	2.0	46	66	84	102	118	134	149	164	177
	2.5	52	75	97	117	136	154	172	188	205
	3.0	58	83	107	129	151	171	190	208	226
	3.5	62	90	115	140	163	184	205	225	245
	4.0	66	95	123	149	173	196	218	240	261

DOWNHILL 2%	1.5	38	56	72	89	105	121	136	151	166
	2.0	47	68	89	109	128	146	165	183	200
	2.5	54	78	101	124	145	165	186	205	224
	3.0	59	86	111	135	158	181	202	223	244
	3.5	63	92	119	145	170	194	217	239	261
	4.0	67	98	126	154	180	205	230	254	277

Minimum considered pressure 1.0 bar

MAX. LATERAL LENGTH (METER) AT DIFFERENT INLET PRESSURE AND DIFFERENT SLOPES

UNIRAM™ CNL 20010/20012 • ID 17.5 MM • KD 0.4 • FLOW RATE 0.7 L/H

		DISTANCE BETWEEN DRIPPERS (METER)								
UPHILL 2%	INLET PRESSURE (BAR)	0.2	0.3	0.4	0.5	0.6	0.7	0.8	0.9	1.0
	1.5	130	162	184	199	209	217	223	228	231
	2.0	182	238	280	313	340	361	378	393	406
	2.5	218	289	346	393	432	466	494	518	539
	3.0	246	329	398	456	505	548	586	618	648
	3.5	269	363	442	509	566	617	662	703	739
	4.0	289	392	479	554	620	678	730	777	819
FLAT TERRAIN	1.5	168	233	292	347	397	445	489	532	573
	2.0	213	297	373	443	507	568	626	681	734
	2.5	245	343	430	511	586	656	722	787	848
	3.0	271	379	476	565	648	727	801	871	939
	3.5	293	409	514	611	701	786	866	943	1017
4.0	312	436	548	652	748	839	925	1006	1085	
DOWNHILL 2%	1.5	207	309	412	514	616	718	817	905	990
	2.0	245	359	471	581	689	796	900	995	1087
	2.5	273	397	517	634	748	860	969	1068	1166
	3.0	296	429	556	678	797	914	1027	1132	1235
	3.5	316	456	591	717	841	962	1079	1189	1295
4.0	334	480	619	752	880	1005	1126	1239	1350	

Minimum considered pressure 1.0 bar Max. working pressure according the dripperline wall thickness definition
Due to lateral filling time and flushing effectiveness it is not recommended to exceed 800 meters lateral length

MAX. LATERAL LENGTH (METER) AT DIFFERENT INLET PRESSURE AND DIFFERENT SLOPES

UNIRAM™ CNL 20010/20012 • ID 17.5 MM • KD 0.4 • FLOW RATE 1.0 L/H

		DISTANCE BETWEEN DRIPPERS (METER)								
UPHILL 2%	INLET PRESSURE (BAR)	0.2	0.3	0.4	0.5	0.6	0.7	0.8	0.9	1.0
	1.5	109	140	162	178	190	200	208	214	219
	2.0	149	198	236	268	295	316	335	352	366
	2.5	177	238	288	331	367	398	426	451	473
	3.0	199	269	328	380	424	463	498	530	558
	3.5	217	296	362	420	472	517	558	596	630
	4.0	233	318	392	456	512	564	610	653	692
FLAT TERRAIN	1.5	133	185	232	276	316	353	389	423	456
	2.0	169	236	296	352	403	452	498	542	583
	2.5	194	272	341	406	465	522	574	626	674
	3.0	215	300	378	449	515	577	636	693	747
	3.5	232	325	408	485	557	624	689	750	809
4.0	247	346	435	518	594	666	734	800	863	
DOWNHILL 2%	1.5	157	233	308	382	455	528	601	673	745
	2.0	189	275	358	439	518	596	674	750	826
	2.5	212	306	396	483	568	650	731	812	891
	3.0	230	332	428	520	609	696	781	864	947
	3.5	247	354	455	552	645	736	824	911	996
4.0	261	374	480	581	677	771	863	953	1041	

Minimum considered pressure 1.0 bar Max. working pressure according the dripperline wall thickness definition

MAX. LATERAL LENGTH (METER) AT DIFFERENT INLET PRESSURE AND DIFFERENT SLOPES

UNIRAM™ CNL 20010/20012 • ID 17.5 MM • KD 0.4 • FLOW RATE 1.6 L/H

		DISTANCE BETWEEN DRIPPERS (METER)								
	INLET PRESSURE (BAR)	0.2	0.3	0.4	0.5	0.6	0.7	0.8	0.9	1.0
	UPHILL 2%	1.5	85	111	132	148	161	173	182	190
2.0		114	153	186	214	237	258	277	293	308
2.5		134	182	222	258	289	317	342	365	386
3.0		149	204	252	293	330	363	394	421	447
3.5		162	223	276	323	364	402	437	469	499
4.0		174	240	297	348	394	436	474	510	544
FLAT TERRAIN	1.5	98	137	171	203	233	261	287	313	337
	2.0	124	174	218	260	298	333	368	401	431
	2.5	143	200	252	299	343	385	425	463	498
	3.0	158	221	278	331	380	426	470	512	552
	3.5	170	239	301	358	411	461	509	554	598
	4.0	181	255	321	382	439	492	542	591	638
DOWNHILL 2%	1.5	111	163	212	262	310	357	404	451	498
	2.0	135	195	252	307	361	412	464	515	564
	2.5	152	219	281	341	399	455	510	564	617
	3.0	166	238	306	370	431	491	549	606	661
	3.5	178	255	326	394	459	522	582	642	700
	4.0	189	270	345	416	484	550	613	674	735

Minimum considered pressure 1.0 bar

Max. working pressure according the dripperline wall thickness definition

MAX. LATERAL LENGTH (METER) AT DIFFERENT INLET PRESSURE AND DIFFERENT SLOPES

UNIRAM™ CNL 20010/20012 • ID 17.5 MM • KD 0.4 • FLOW RATE 2.3 L/H

		DISTANCE BETWEEN DRIPPERS (METER)								
	INLET PRESSURE (BAR)	0.2	0.3	0.4	0.5	0.6	0.7	0.8	0.9	1.0
	UPHILL 2%	1.5	69	92	110	126	139	150	159	167
2.0		91	124	152	176	197	216	233	248	263
2.5		107	146	181	211	238	262	284	304	323
3.0		119	164	203	238	269	298	324	348	371
3.5		129	179	222	261	296	328	358	385	411
4.0		138	192	238	281	319	354	386	417	446
FLAT TERRAIN	1.5	77	108	136	161	184	207	228	248	267
	2.0	98	137	173	205	235	264	291	317	342
	2.5	113	158	199	237	272	305	336	366	395
	3.0	124	175	220	262	301	337	372	405	437
	3.5	134	189	238	283	325	365	402	439	473
	4.0	143	201	254	302	347	389	430	468	505
DOWNHILL 2%	1.5	85	124	161	197	232	267	302	335	369
	2.0	105	150	194	235	275	314	351	389	425
	2.5	119	170	217	263	307	349	390	430	469
	3.0	130	185	237	286	332	378	422	464	506
	3.5	139	199	254	306	355	403	449	494	537
	4.0	148	210	268	323	375	425	474	520	566

Minimum considered pressure 1.0 bar

Max. working pressure according the dripperline wall thickness definition

MAX. LATERAL LENGTH (METER) AT DIFFERENT INLET PRESSURE AND DIFFERENT SLOPES

UNIRAM™ CNL 20010/20012 • ID 17.5 MM • KD 0.4 • FLOW RATE 3.5 L/H

	DISTANCE BETWEEN DRIPPERS (METER)									
	INLET PRESSURE (BAR)	0.2	0.3	0.4	0.5	0.6	0.7	0.8	0.9	1.0
UPHILL 2%	1.5	54	73	89	102	114	124	133	141	149
	2.0	71	97	120	140	157	174	188	202	214
	2.5	82	114	141	166	187	207	226	243	259
	3.0	92	127	158	186	211	235	256	276	295
	3.5	99	138	172	203	231	257	281	303	325
	4.0	106	148	184	218	248	277	302	328	351

FLAT TERRAIN	1.5	59	82	103	123	141	158	174	189	204
	2.0	75	104	132	157	179	202	222	242	261
	2.5	86	120	152	181	207	232	257	280	302
	3.0	95	133	168	200	229	258	284	310	334
	3.5	102	144	181	216	248	279	307	335	361
	4.0	109	153	193	230	265	297	328	357	386

DOWNHILL 2%	1.5	63	92	118	144	169	193	217	240	264
	2.0	78	112	144	174	202	230	258	284	310
	2.5	89	127	162	196	227	258	288	317	345
	3.0	98	139	177	214	248	281	313	344	374
	3.5	105	149	190	229	265	300	334	367	399
	4.0	111	158	202	243	281	318	354	388	421

Minimum considered pressure 1.0 bar

Max. working pressure according the dripperline wall thickness definition

MAX. LATERAL LENGTH (METER) AT DIFFERENT INLET PRESSURE AND DIFFERENT SLOPES

UNIRAM™ CNL 23010 • ID 20.8 MM • KD 0.3 • FLOW RATE 0.7 L/H

	DISTANCE BETWEEN DRIPPERS (METER)									
	INLET PRESSURE (BAR)	0.2	0.3	0.4	0.5	0.6	0.7	0.8	0.9	1.0
UPHILL 2%	1.5	161	191	210	221	228	233	237	239	241
	2.0	234	296	340	372	395	414	427	438	447
	2.5	284	369	433	483	521	553	579	600	618
	3.0	324	426	506	570	623	667	704	735	762

FLAT TERRAIN	1.5	229	318	398	471	538	602	662	720	775
	2.0	292	406	508	602	688	770	848	922	993
	2.5	336	467	586	694	795	890	979	1066	1148
	3.0	371	517	648	768	880	985	1085	1180	1272

DOWNHILL 2%	1.5	302	458	616	775	914	1049	1180	1310	1437
	2.0	351	520	688	855	1005	1149	1290	1428	1564
	2.5	388	569	746	921	1079	1231	1380	1526	1668
	3.0	418	610	796	977	1143	1303	1458	1609	1758

Minimum considered pressure 1.0 bar

Due to lateral filling time and flushing effectiveness it is not recommended to exceed 800 meters lateral length

MAX. LATERAL LENGTH (METER) AT DIFFERENT INLET PRESSURE AND DIFFERENT SLOPES

UNIRAM™ CNL 23010 • ID 20.8 MM • KD 0.3 • FLOW RATE 1.0 L/H

		DISTANCE BETWEEN DRIPPERS (METER)								
UPHILL 2%	INLET PRESSURE (BAR)	0.2	0.3	0.4	0.5	0.6	0.7	0.8	0.9	1.0
	1.5	138	170	191	205	215	222	227	231	234
	2.0	195	252	295	328	354	375	392	406	417
	2.5	234	308	367	415	454	487	515	539	560
	3.0	264	352	424	483	534	577	614	648	677
FLAT TERRAIN	1.5	182	252	316	374	428	479	527	572	617
	2.0	231	322	403	478	547	613	674	734	790
	2.5	266	371	465	551	631	707	778	847	913
	3.0	294	410	514	610	699	783	862	939	1011
DOWNHILL 2%	1.5	227	341	454	568	682	795	894	989	1084
	2.0	268	394	517	639	758	877	982	1085	1187
	2.5	299	435	566	694	820	944	1056	1165	1272
	3.0	324	468	607	742	872	1001	1118	1233	1345

Minimum considered pressure 1.0 bar

MAX. LATERAL LENGTH (METER) AT DIFFERENT INLET PRESSURE AND DIFFERENT SLOPES

UNIRAM™ CNL 23010 • ID 20.8 MM • KD 0.3 • FLOW RATE 1.6 L/H

		DISTANCE BETWEEN DRIPPERS (METER)								
UPHILL 2%	INLET PRESSURE (BAR)	0.2	0.3	0.4	0.5	0.6	0.7	0.8	0.9	1.0
	1.5	110	140	162	178	191	200	208	214	219
	2.0	150	199	237	269	295	317	336	352	366
	2.5	178	239	289	331	368	399	427	452	473
	3.0	200	270	330	380	425	464	499	530	559
FLAT TERRAIN	1.5	134	186	233	276	316	354	390	424	456
	2.0	170	237	297	353	404	452	498	542	584
	2.5	196	273	343	407	466	522	575	626	675
	3.0	216	302	379	450	516	578	638	694	748
DOWNHILL 2%	1.5	158	234	309	383	457	529	602	674	747
	2.0	190	276	359	441	520	598	674	752	827
	2.5	213	308	398	485	569	652	733	813	892
	3.0	232	334	430	522	611	697	782	866	948

Minimum considered pressure 1.0 bar

MAX. LATERAL LENGTH (METER) AT DIFFERENT INLET PRESSURE AND DIFFERENT SLOPES

UNIRAM™ CNL 23010 • ID 20.8 MM • KD 0.3 • FLOW RATE 2.3 L/H

		DISTANCE BETWEEN DRIPPERS (METER)								
UPHILL 2%	INLET PRESSURE (BAR)	0.2	0.3	0.4	0.5	0.6	0.7	0.8	0.9	1.0
	1.5	90	118	139	156	169	179	188	195	202
	2.0	122	163	197	226	250	272	290	307	321
	2.5	143	194	237	274	307	335	361	384	405
	3.0	160	219	268	312	350	385	417	446	472
FLAT TERRAIN	1.5	106	147	184	219	250	280	309	336	361
	2.0	134	187	235	279	320	358	394	429	463
	2.5	154	216	271	322	369	414	456	496	535
	3.0	170	238	300	356	409	458	505	549	592
DOWNHILL 2%	1.5	121	177	232	286	338	391	443	494	546
	2.0	147	212	274	334	392	449	506	561	616
	2.5	165	237	305	371	433	494	554	613	671
	3.0	180	258	331	401	467	532	595	657	718

Minimum considered pressure 1.0 bar

MAX. LATERAL LENGTH (METER) AT DIFFERENT INLET PRESSURE AND DIFFERENT SLOPES

UNIRAM™ CNL 23010 • ID 20.8 MM • KD 0.3 • FLOW RATE 3.5 L/H

		DISTANCE BETWEEN DRIPPERS (METER)								
UPHILL 2%	INLET PRESSURE (BAR)	0.2	0.3	0.4	0.5	0.6	0.7	0.8	0.9	1.0
	1.5	71	95	114	129	142	153	162	171	178
	2.0	95	128	157	182	203	222	239	255	269
	2.5	111	152	187	218	245	270	292	312	332
	3.0	124	170	210	246	278	307	334	358	381
FLAT TERRAIN	1.5	80	112	140	167	191	214	235	257	276
	2.0	102	143	179	213	244	273	302	328	353
	2.5	117	164	206	245	281	316	348	379	408
	3.0	129	182	228	272	311	349	385	419	452
DOWNHILL 2%	1.5	89	129	168	206	242	279	314	349	385
	2.0	109	157	202	245	286	326	366	405	443
	2.5	124	177	226	274	319	363	406	447	488
	3.0	135	193	246	297	346	393	438	482	525

Minimum considered pressure 1.0 bar